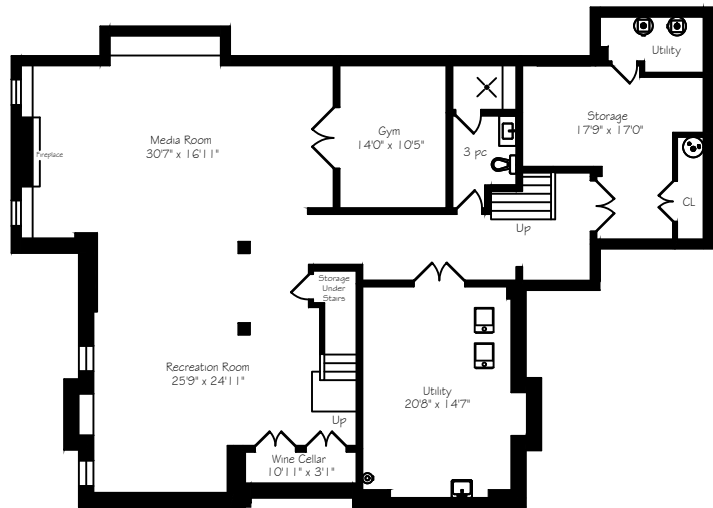
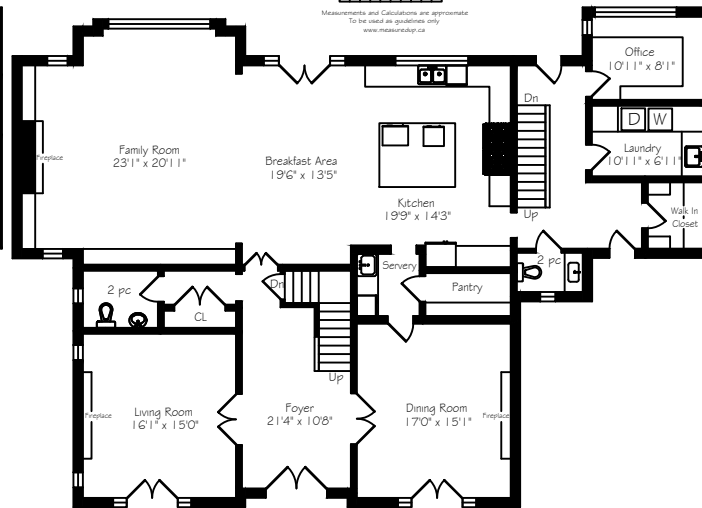


56 Ennisclare Drive E

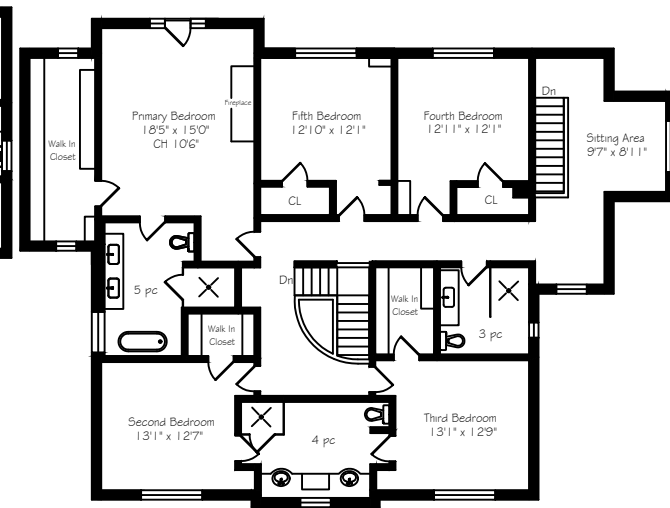
Measurements and Calculations are approximate.
To be used as guidelines only.
www.moscowdesign.co



Lower Level
2577 Square Feet

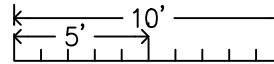


Main Floor
2557 Square Feet

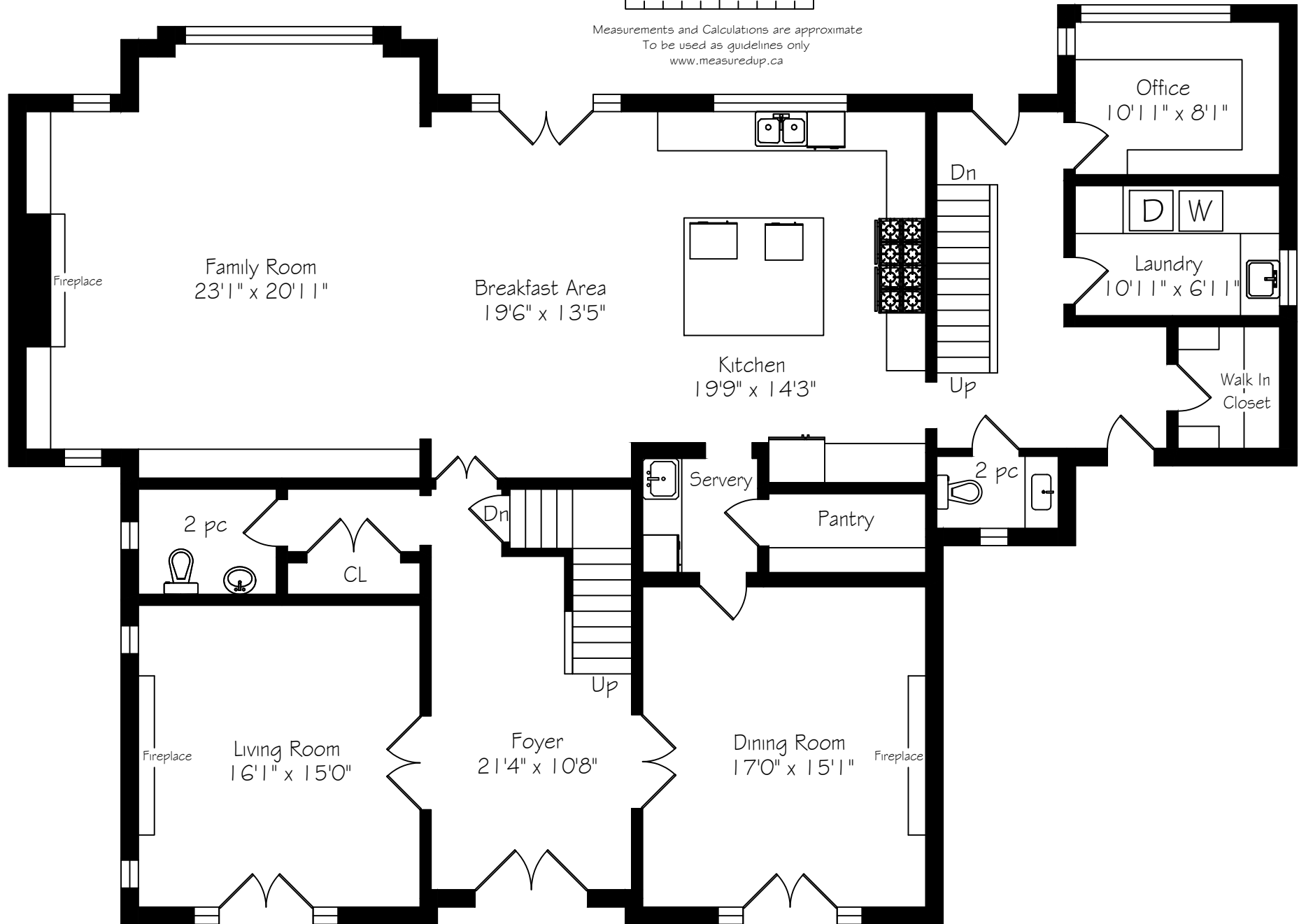


Second Floor
2366 Square Feet

56 Ennisclare Drive E

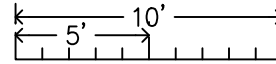


Measurements and Calculations are approximate
To be used as guidelines only
www.measuredup.ca

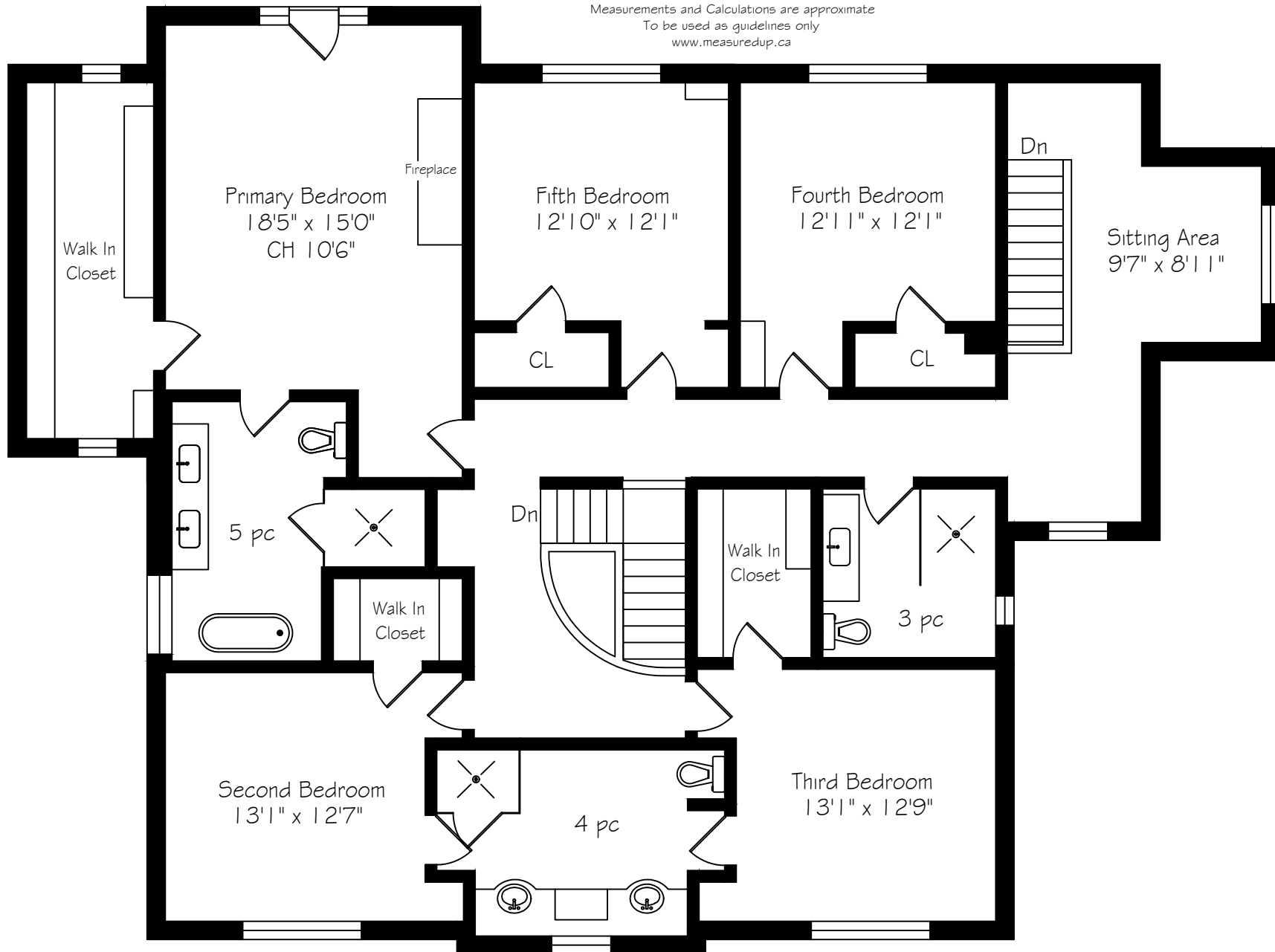


Main Floor
2557 Square Feet

56 Ennisclare Drive E

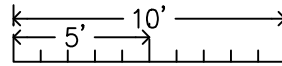


Measurements and Calculations are approximate
To be used as guidelines only
www.measuredup.ca

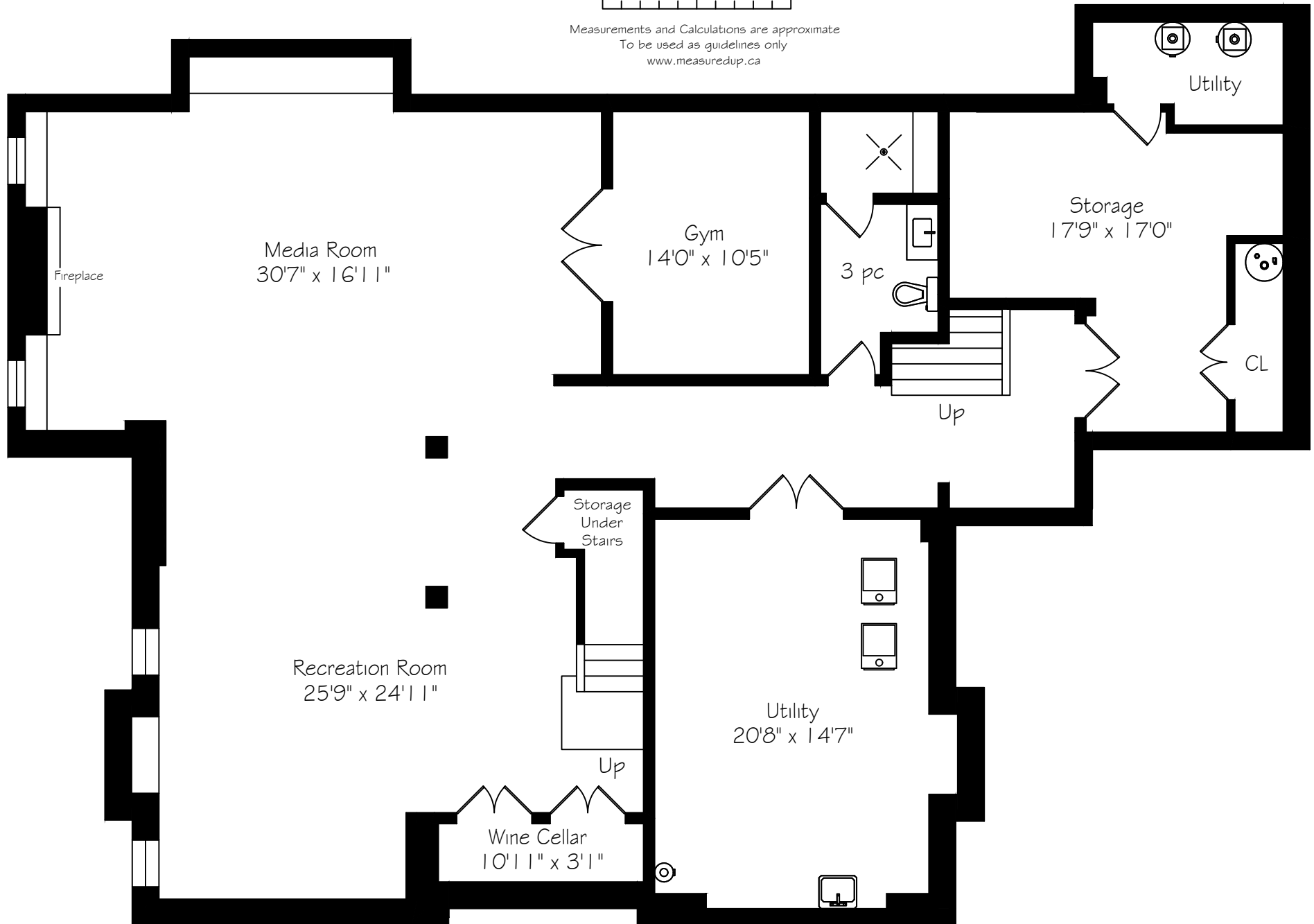


Second Floor
2366 Square Feet

56 Ennisclare Drive E

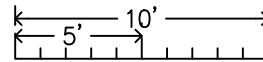


Measurements and Calculations are approximate
To be used as guidelines only
www.measuredup.ca

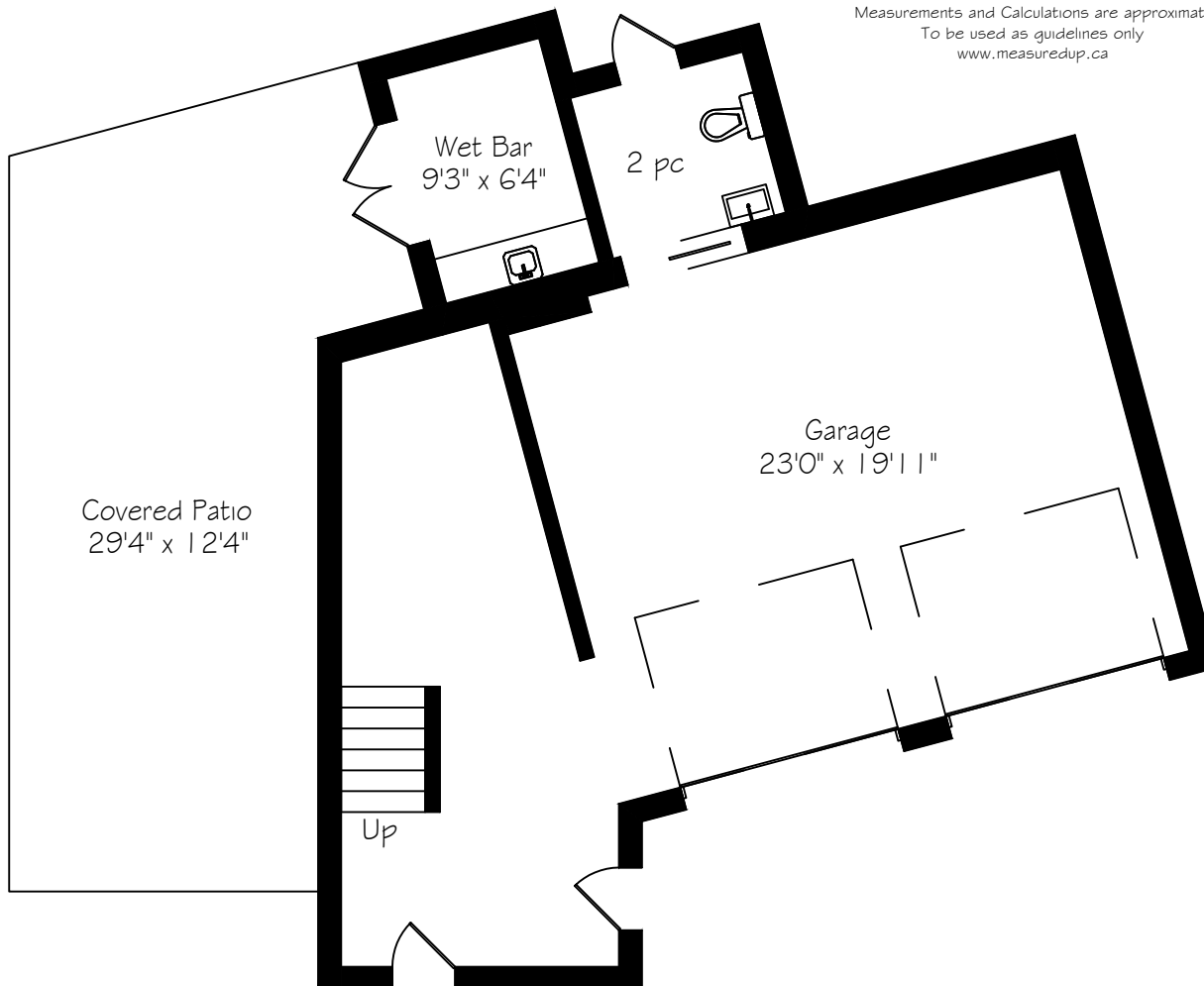


Lower Level
2577 Square Feet

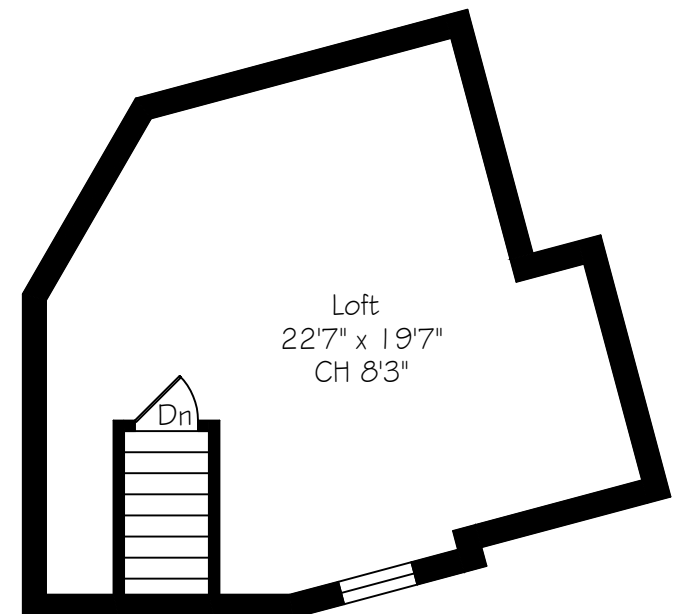
56 Ennisclare Drive E



Measurements and Calculations are approximate
To be used as guidelines only
www.measuredup.ca



Garage Main Floor
956 Square Feet



Garage Second Floor
447 Square Feet

56 Ennisclare Drive E Metrics Conversion

Measurements and Calculations are approximate

To be used as guidelines only

	IMPERIAL				METRIC			CH
Main Floor	2557	sf			238	sqm		9'0"
Foyer	21'	4"	x	10' 8"	6.50	x	3.25	
Kitchen	19'	9"	x	14' 3"	6.02	x	4.34	
Breakfast Area	19'	6"	x	13' 5"	5.94	x	4.09	
Living Room	16'	1"	x	15' 0"	4.90	x	4.57	
Dining Room	17'	0"	x	15' 1"	5.18	x	4.60	
Family Room	23'	1"	x	20' 11"	7.04	x	6.38	
Office	10'	11"	x	8' 1"	3.33	x	2.46	
Laundry Room	10'	11"	x	6' 11"	3.33	x	2.11	
Second Floor	2366	sf			220	sqm		8'0"-10'6"
Primary Bedroom	18'	5"	x	15' 0"	5.61	x	4.57	
Second Bedroom	13'	1"	x	12' 7"	3.99	x	3.84	
Third Bedroom	13'	1"	x	12' 9"	3.99	x	3.89	
Fourth Bedroom	12'	11"	x	12' 1"	3.94	x	3.68	
Fifth Bedroom	12'	10"	x	12' 1"	3.91	x	3.68	
Sitting Area	9'	7"	x	8' 11"	2.92	x	2.72	
Lower Level	2547	sf			237	sqm		9'0"
Recreation Room	25'	9"	x	24' 11"	7.85	x	7.59	
Media Room	30'	7"	x	16' 11"	9.32	x	5.16	
Gym	14'	0"	x	10' 5"	4.27	x	3.18	
Utility Room	20'	8"	x	14' 7"	6.30	x	4.44	
Storage	17'	9"	x	17' 0"	5.41	x	5.18	
Wine Cellar	10'	11"	x	3' 1"	3.33	x	0.94	
Total Square Footage	7470	sf			694	sqm		
Garage Main Floor	956	sf			89	sqm		
Garage	23'	0"	x	19' 11"	7.01	x	6.07	
Wet Bar	9'	3"	x	6' 4"	2.82	x	1.93	
Garage Second Floor	447	sf			42	sqm		
Loft	22'	7"	x	19' 7"	6.88	x	5.97	
Total Area Measured	8426	sf			783	sqm		September 11, 2025